



**THE ESSENTIALS OF IT**  
SIMPLE FOUNDATIONS WITH EXPERT  
SUPPORT FOR GROWING BUSINESSES



# THE IMPORTANCE OF A SECURE IT FOUNDATION

---

Keeping up with rapid changes in IT can be overwhelming for any business owner, especially when responsible for safeguarding a network that handles sensitive data. While advancements like artificial intelligence open exciting possibilities, they also introduce new vulnerabilities, providing hackers and scammers with more sophisticated tools. Amidst these technological shifts, the core fundamentals of IT remain crucial for small to medium-sized businesses aiming for growth: a robust network, strong cybersecurity, reliable hardware, and responsive support. These elements are essential for staying competitive and safeguarding against evolving threats.

How do you ensure that you and your team can log in seamlessly and carry out daily tasks without interruption? This guide will explore the importance of a secure IT network and how AIS Tech excels in delivering these essential foundations. With a commitment to understanding and navigating the complexities of modern IT, AIS Tech ensures your business can grow confidently and securely.



# PRIORITISING CYBERSECURITY PROTECTING YOUR BUSINESS IN A DIGITAL WORLD

Businesses face rising cybersecurity threats from data breaches to ransomware attacks. This makes a secure network not just a precaution but a necessity. It should be the first consideration when setting up a workplace IT network. In addition, Cybersecurity is foundational to any IT network, particularly for businesses handling sensitive data or financial transactions. It is important to employ multi-layered security protocols and advanced Microsoft security measures, such as Microsoft Defender for Endpoint and Conditional Access policies. These protocols provide constant monitoring, automated threat detection, and data protection across Microsoft 365 applications. In addition to robust software, employee awareness is vital in cybersecurity.



**A study by IBM found that nearly **95%** of data breaches are due to human error.**

**AIS Tech provides regular cybersecurity awareness training to equip employees with the skills to recognise phishing attacks, manage passwords securely, and follow safe online practices.**

Further enhancing security, two-factor authentication (2FA) adds an extra layer of verification, ensuring that even if login credentials are compromised, unauthorised access is prevented. With Single Sign-On (SSO) and Multi-Factor Authentication (MFA), businesses can secure critical applications without adding unnecessary complexity for users.

AIS Tech's cybersecurity framework includes endpoint protection, regular system monitoring, and secure backup solutions. Additionally, we implement the Zero Trust model, which assumes no user or device is trustworthy until verified. This approach limits potential entry points for hackers, providing a stronger defence against cyber threats.

**AIS Tech also offers ongoing cybersecurity awareness training to educate employees about phishing scams, suspicious activities, and safe online practices, reducing the risk of human error.**



Silver  
**Microsoft Partner**

**DELL**Technologies  
DELL EXPERT NETWORK

  
**CISCO**  
Partner

 **CYBER  
ESSENTIALS  
PLUS**



## NETWORK MAPPING AND CONFIGURATION SETTING UP A SCALABLE, SECURE NETWORK

---

A well-designed network infrastructure is essential for efficient data flow, reliable connectivity, and ease of scaling. When setting up a network, AIS Tech begins with a comprehensive network map that considers business size, layout, and current IT needs. This map helps identify the best placement for network hardware and addresses potential weak points that could lead to connectivity issues.

**Key network components** for a growing business include **switches** to direct traffic between devices, **network routers** for connecting local networks to the internet, and **firewalls** to protect against unauthorised access. High-quality **Cat6 or Cat6a Ethernet cables** ensure reliable connectivity for connected devices, while **network ports** and **PoE (Power over Ethernet) switches** allow flexible workstation setups without extensive cabling.

Network planning also considers **Wi-Fi access points** to ensure wireless coverage across the office, allowing for mobile workspaces and meeting rooms. By using **VLANs (Virtual Local Area Networks)**, we can separate network traffic for enhanced security and performance. This setup allows growing businesses to add new users and devices without overloading the network, ensuring smooth, uninterrupted connectivity.

# INVESTING IN QUALITY HARDWARE BUILDING A RELIABLE FOUNDATION

**A secure network starts with reliable hardware. While cutting costs on equipment may seem appealing, substandard hardware can lead to performance issues and increase the risk of security vulnerabilities. AIS Tech provides high-quality hardware solutions, from servers and workstations to networking equipment, ensuring your infrastructure is both durable and efficient.**

The choice of hardware significantly impacts employee productivity and job satisfaction. Provide your business with durable, high-performance laptops and desktops suited to your unique work demands. For example, professionals handling data-heavy tasks or creative projects may benefit from laptops with powerful processors and ample RAM, while teams focused on remote work need devices optimised for battery life and portability.

In addition to core computing devices, peripherals like dual monitors, ergonomic keyboards, and high-resolution webcams contribute to a comfortable and efficient workspace.

**AIS Tech supplies and configures peripherals that enhance the user experience and improve productivity. For instance, dual monitors can increase efficiency by up to **42%**, as users can work across multiple screens without switching between tabs.**

We understand that growing businesses need scalable hardware options that can adapt to increased workloads and additional users. AIS Tech offers customised solutions that align with your budget and growth objectives. We ensure each component of your network is optimised and securely installed, giving you a solid foundation to build upon as your business scales.

# MICROSOFT 365 THE FOUNDATION OF A RELIABLE IT INFRASTRUCTURE

Having a reliable and accessible IT infrastructure is essential for productivity, collaboration, and growth. Microsoft 365 has become the backbone of modern business operations, offering a suite of tools that empower employees to work efficiently, securely, and collaboratively—whether in the office or remotely.



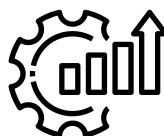
## WHY MICROSOFT 365?

Microsoft 365 provides an integrated platform for businesses to streamline their IT operations. Here's how it supports a reliable and accessible IT infrastructure.



### SEAMLESS COLLABORATION

Tools like Microsoft Teams, SharePoint, and OneDrive enable real-time collaboration, file sharing, and communication. Employees can work together effectively, regardless of location, with instant access to shared documents and team updates.



### ENHANCED PRODUCTIVITY

Applications like Word, Excel, and PowerPoint are available both online and offline, ensuring employees have the tools they need at their fingertips. With the cloud-based platform, updates are automatic, so your team always has the latest features.



### SECURITY BUILT-IN

Microsoft 365 incorporates advanced security protocols, including data encryption, Conditional Access policies, and multi-factor authentication (MFA). These measures ensure your data remains safe and accessible only to authorised personnel.



### SCALABILITY

Microsoft 365 grows with your business. Whether you're adding new employees, integrating additional applications, or expanding storage capacity, the platform's flexibility ensures it adapts seamlessly to your needs.

# FUNDAMENTALS OF SETTING UP A RELIABLE IT INFRASTRUCTURE

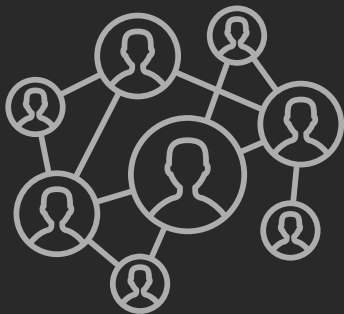
---

A reliable IT infrastructure begins with a solid foundation that prioritises accessibility, security, and efficiency. Here are the key components of setting up an IT system that works for your business and your employees.

## CLOUD-FIRST APPROACH



Migrating to cloud-based platforms like Microsoft 365 eliminates reliance on physical servers, reducing maintenance costs and downtime risks. The cloud ensures employees can access the tools and files they need from anywhere, supporting flexible working arrangements.



## NETWORK DESIGN AND ACCESSIBILITY

A well-planned network ensures smooth data flow and connectivity. Setting up routers, switches, and secure Wi-Fi access points is crucial for providing employees with stable and fast internet connections. Consider implementing Virtual Private Networks (VPNs) for secure remote access to your infrastructure.

## SECURE ENDPOINTS



Protecting individual devices, such as laptops and mobile phones, is essential for a secure and reliable IT environment. Solutions like Microsoft Defender for Endpoint integrate seamlessly with Microsoft 365, offering advanced threat detection and protection against malware and phishing attacks.





## **SIMPLIFIED USER ACCESS**

Centralised user management through Microsoft 365 simplifies IT administration. Single Sign-On (SSO) and multi-factor authentication (MFA) ensure employees can securely log into their accounts without unnecessary complexity. Conditional Access can further restrict logins based on user roles or geographic location.



## **AUTOMATED UPDATES AND BACKUPS**

A well-planned network ensures smooth data flow and connectivity. Setting up routers, switches, and secure Wi-Fi access points is crucial for providing employees with stable and fast internet connections. Consider implementing Virtual Private Networks (VPNs) for secure remote access to your infrastructure.



## **SCALABILITY AND GROWTH**

Building an IT infrastructure with scalability in mind ensures your business is prepared for future growth. Microsoft 365 allows you to add new users and applications as needed without overhauling your existing setup, saving time and costs in the long run.



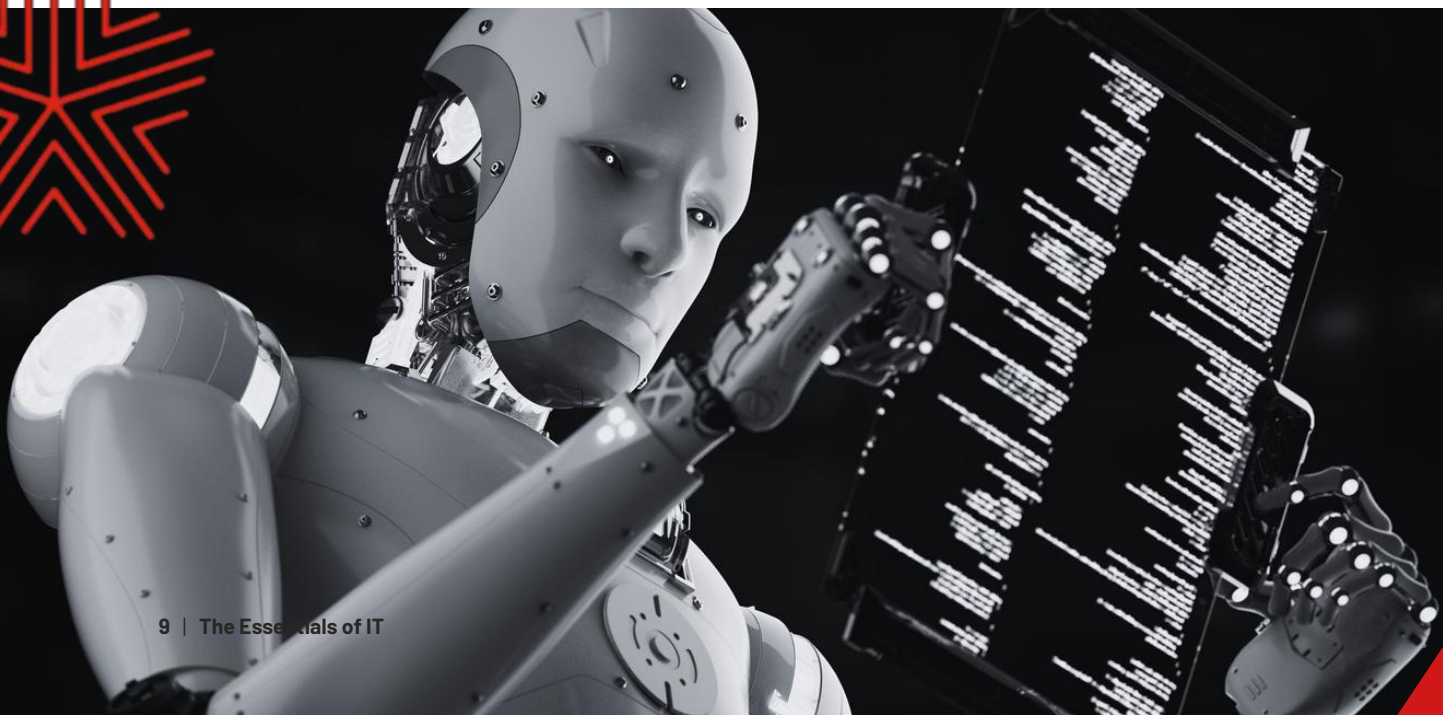
# THE ROLE OF AI

## LEVERAGING INNOVATION FOR ENHANCED SECURITY AND EFFICIENCY

While AI can sometimes feel daunting, it offers considerable benefits when managed correctly. AI is transforming IT management, enhancing cybersecurity, automating workflows, and streamlining customer relationship management (CRM). Organisations are utilising AI-driven monitoring and analytics to improve security and productivity. For example, AI can detect unusual patterns in network traffic and immediately alert our team to potential security issues. This proactive approach minimises downtime and strengthens your defences against cyberattacks.

Beyond security, AI can assist in managing routine tasks such as email sorting, where machine learning algorithms can filter spam, prioritise critical emails, and even draft responses. In CRM systems, AI chatbots can automate initial customer interactions, answering common queries and ensuring prompt responses. For IT support teams, AI-enabled diagnostic tools can identify and troubleshoot network issues faster, reducing downtime and boosting productivity.

Additionally, AI helps automate routine tasks, such as system updates and diagnostics, which saves time and reduces human error. At AIS Tech, we ensure that AI supports, rather than overwhelms, your team, providing you with innovative tools to streamline operations while maintaining control.





## RESPONSIVE IT SUPPORT PEACE OF MIND WHEN YOU NEED IT MOST

Even the best hardware and software solutions require support. AIS Tech offers responsive, round-the-clock support, ensuring that any IT issues your business faces are quickly resolved. Our dedicated support team guarantees a one-hour response time, so you're never left waiting during a critical moment.



Partnering with a dedicated IT support provider like AIS Tech allows businesses to focus on core activities while we handle IT management. Our 24/7 helpdesk offers peace of mind, with expert technicians ready to assist at any hour, ensuring minimal disruption. With proactive monitoring, we detect and resolve issues before they impact business operations, allowing for seamless day-to-day functionality.

AIS Tech goes beyond problem-solving by offering strategic IT planning, which includes scaling, upgrading, and aligning IT infrastructure with business goals. Whether you're expanding into new locations or upgrading to accommodate growth, our tailored solutions provide stability, flexibility, and future-proofing to keep your business competitive.

**In a rapidly changing digital landscape, AIS Tech is committed to providing the security, hardware, and support your business needs to succeed and grow with confidence.**

# FUTURE-PROOFING YOUR BUSINESS WITH AIS TECH

---

AIS Tech provides the expertise, technology, and support to build a resilient network, empowering your business to grow confidently and securely. With a commitment to robust cybersecurity, dependable hardware, and responsive support, we're here to ensure your IT network keeps pace with your ambitions.

AIS Tech specialise in implementing and managing Microsoft 365 as part of a reliable IT infrastructure. From setting up secure networks to ensuring seamless integration of cloud-based tools, we provide tailored solutions that meet your business needs. Whether you're starting from scratch or enhancing your existing systems, our team ensures your IT infrastructure is robust, accessible, and built to support your employees every step of the way.

Let AIS Tech be your trusted partner in navigating the complexities of today's digital landscape—keeping your business protected, productive, and poised for growth.



---

**24/7/365 help desk**  
**Managed WiFi**  
**Enterprise-level support**  
**Same-day site deployment**  
**Cybersecurity Specialists**  
**Project Consultancy**  
**Structured Cabling**  
**Hardware Rental**  
**Business broadband**

---



# TESTIMONIALS



"As a small business, we reached 18 staff earlier this year (now at 35) and began to struggle with IT infrastructure & concerns over security as we grew. After researching the options, I came across Chris at AIS, and with his vast previous experience overseeing the IT for huge international businesses I felt secure in proceeding to instruct his team"



## Access Infinity

"The team has been super-responsive to any IT support requests from our team, even those beyond Microsoft and handled scaling up our service requests with our company growth from 18 - 95, an APAC office, adopting infosec and asset management best practices, website hosting, specialist client compliance management and now supporting us in working towards ISO27001 certification"



## klöeber®

"Thanks to AIS we successfully migrated our servers to the cloud and set our employees up on new laptops to work from home. Something that we didn't think was affordable until the team at AIS provided us with different options. Their responses to daily tickets are dealt with quickly and efficiently".





+44 1268 972 532



[info@aistech.co.uk](mailto:info@aistech.co.uk)



Essex, United Kingdom



**Let's Connect**

---